

BROKK 400



Heavy-duty demolition power

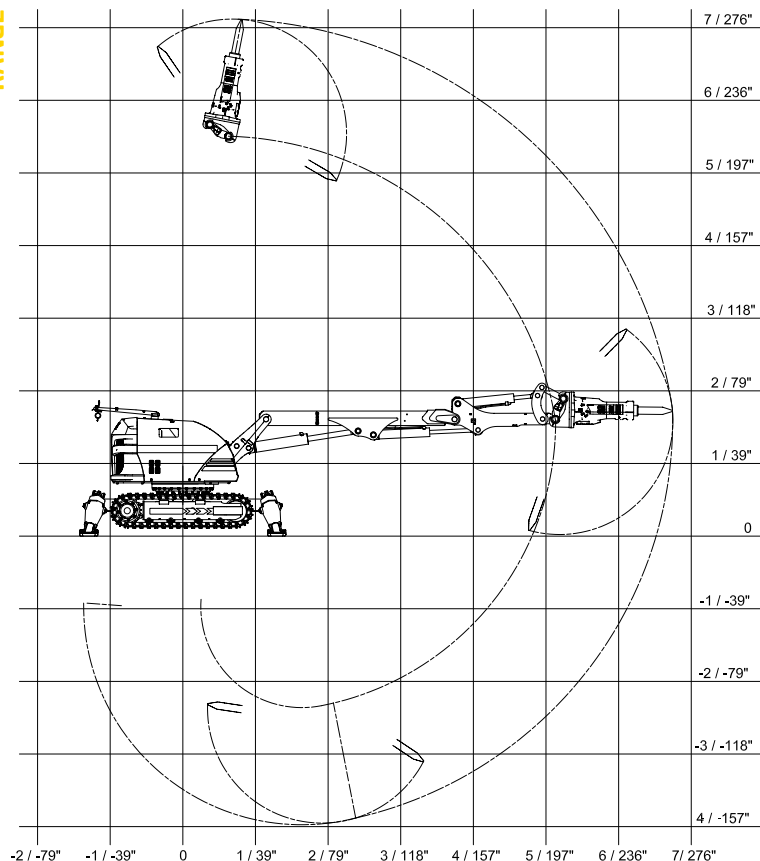
THE BROKK 400 offer a high production capacity along with mobility and versatility. As with all Brokks, it has unsurpassed capacity for its size and weight. With a reach of almost 7 meters (23.1 feet) and a full 360-degree turning radius, the Brokk 400 provides excellent access to the work area without the need for time-consuming repositioning. The Brokk 400 weighs 4,800 kg without attachments and

can handle tools up to 600 kilos in weight. With an impressive power-to-weight ratio, the 400 has the muscle to take on heavily-reinforced concrete structures while eliminating the need for expensive shoring. It's also very productive in open spaces. And in all applications, the operator remains at a safe distance, away from vibration and falling debris.

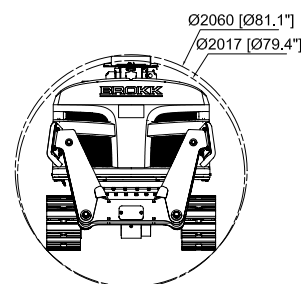
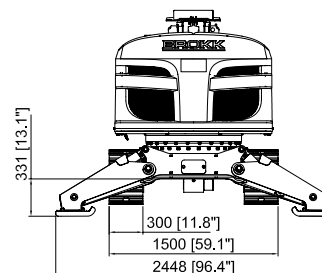
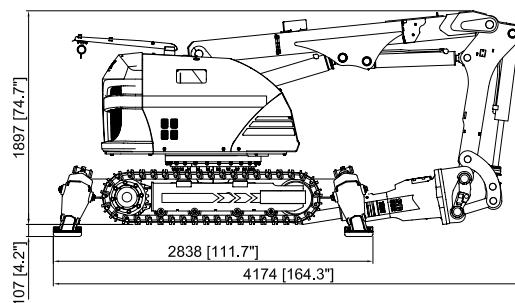
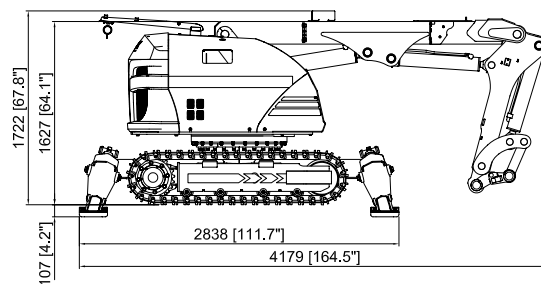
APPLICATIONS

A favorite for the toughest heavy-duty work, such as removing heavily-reinforced concrete vaults and foundations with speed and accuracy.

RANGE



SIZE



TECHNICAL DATA

Hydraulic breaker in illustrations

Load and stability diagram can be ordered from Brokk AB

SB 552

Performance

| | |
|-----------------------|----------------------------|
| Slewing speed | 20 sec/360° |
| Transport speed, max. | 2.5 km/h; 0.7 m/s; 1.6 mph |
| Incline angle, max. | 30° |

Hydraulic system

| | |
|---------------------------|-----------------------------------|
| Hydraulic system capacity | 160 l; 42.3 US gal |
| Pump type | Variable load-sensing piston pump |
| System pressure, standard | 16.5 MPa; 2,393 psi |
| System pressure, max*** | 22.0 MPa; 3,143 psi |
| Oil flow max* | 50Hz 115 l/min; 30.4 US gal/min |
| | 60Hz 130 l/min; 34.3 US gal/min |

Electric motor

| | |
|-----------------|-------------------------|
| Type | ABB |
| Output** | 30kW |
| Current** | 65A |
| Starting device | Soft start/Direct start |

Control system

| | |
|--------------|----------------------|
| Control type | Portable control box |
| Signal code | Digital |
| Transfer | Cable/Radio |

Weight

| | |
|--|----------------------|
| Weight of machine excluding attachment | 4,800 kg; 10,583 lbs |
|--|----------------------|

Machine noise level

| | |
|---|-----------|
| Sound power level Lwa, measured according to directive 2000/14/EC | 100 dB(A) |
|---|-----------|

*Max pump flow and max system pressure cannot be delivered at the same time as the engine will overload

**Valid for 400V/50Hz

***Option for some special attachments

TOOLS

